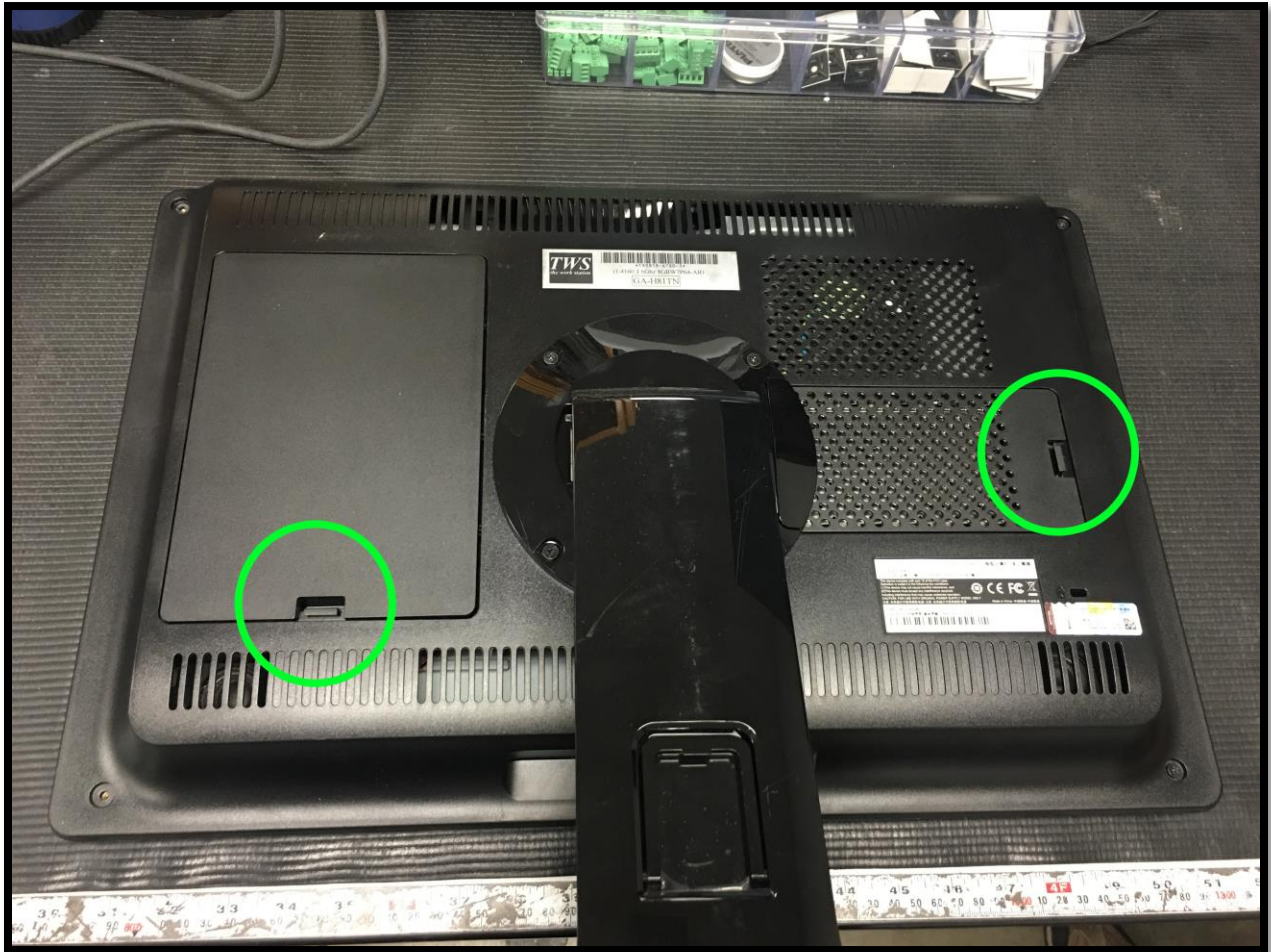
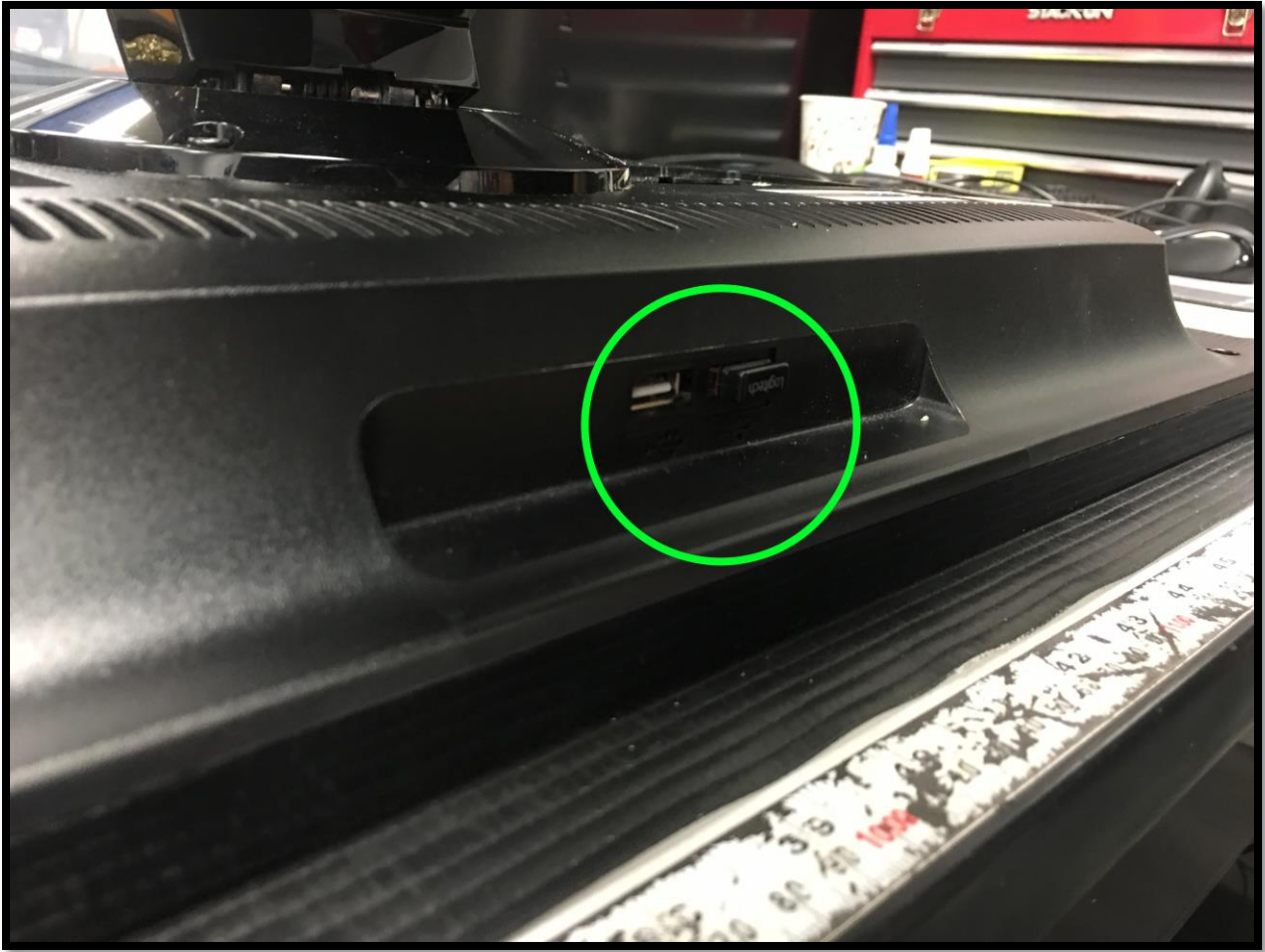


How to replace the Power SATA Cable on a Gigabyte 21.5" All-in-One PC.

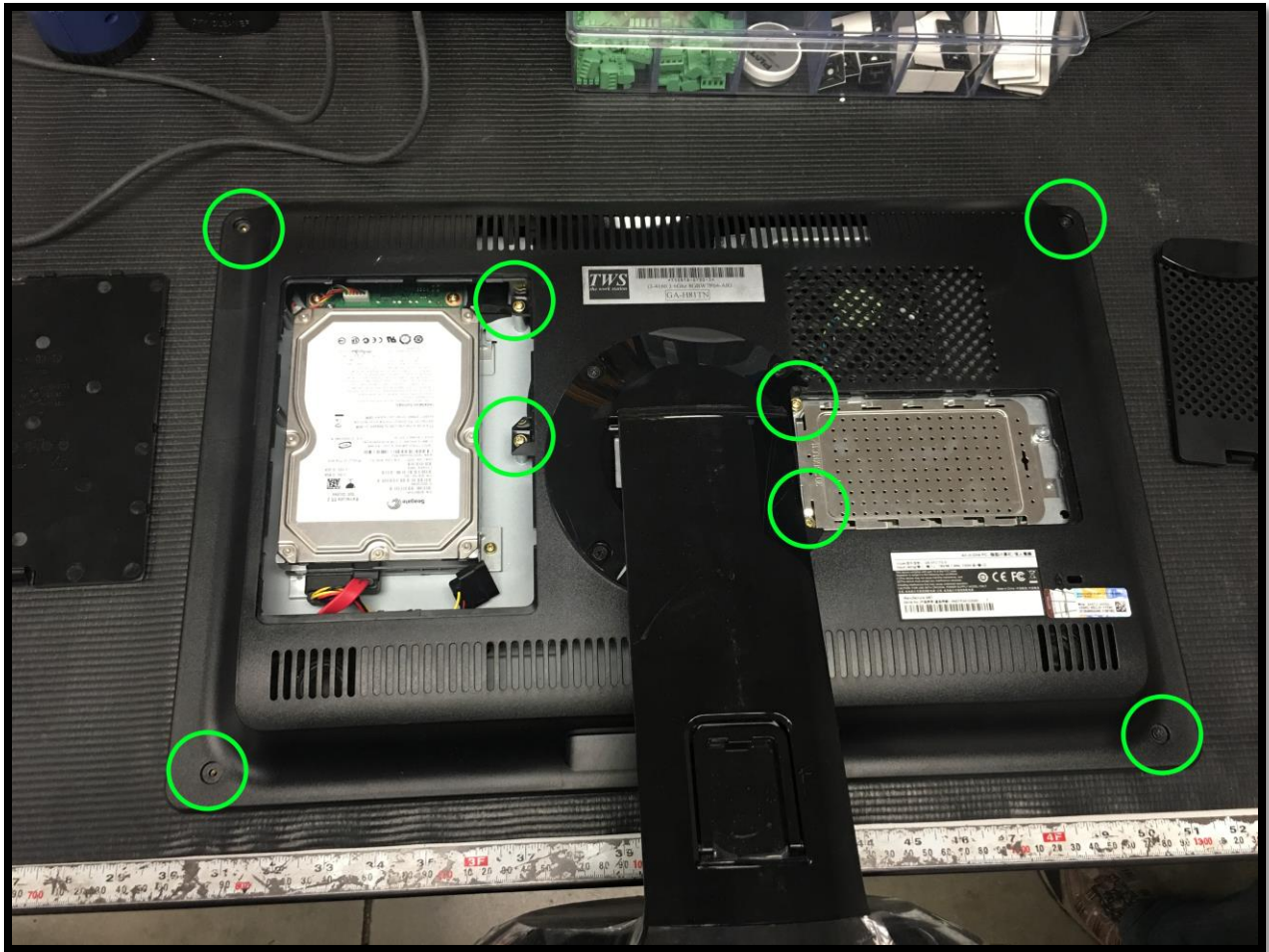
1. Lay the All-in-One on its face. And remove the two back covers.



2. Remove ALL cords and USB Dongles from the PC. (The keyboard/mouse dongle is located on the bottom of the PC.)



3. Use the four (4) black screws in each corner. Then remove the four (4) gold screws under the two covers that were removed.



Close up of the mounting points for the gold screws.



4. Gently lift the back of the case up.

NOTE: There are plastic tabs on the top lip. Gently pry the top of the case away from the bottom.

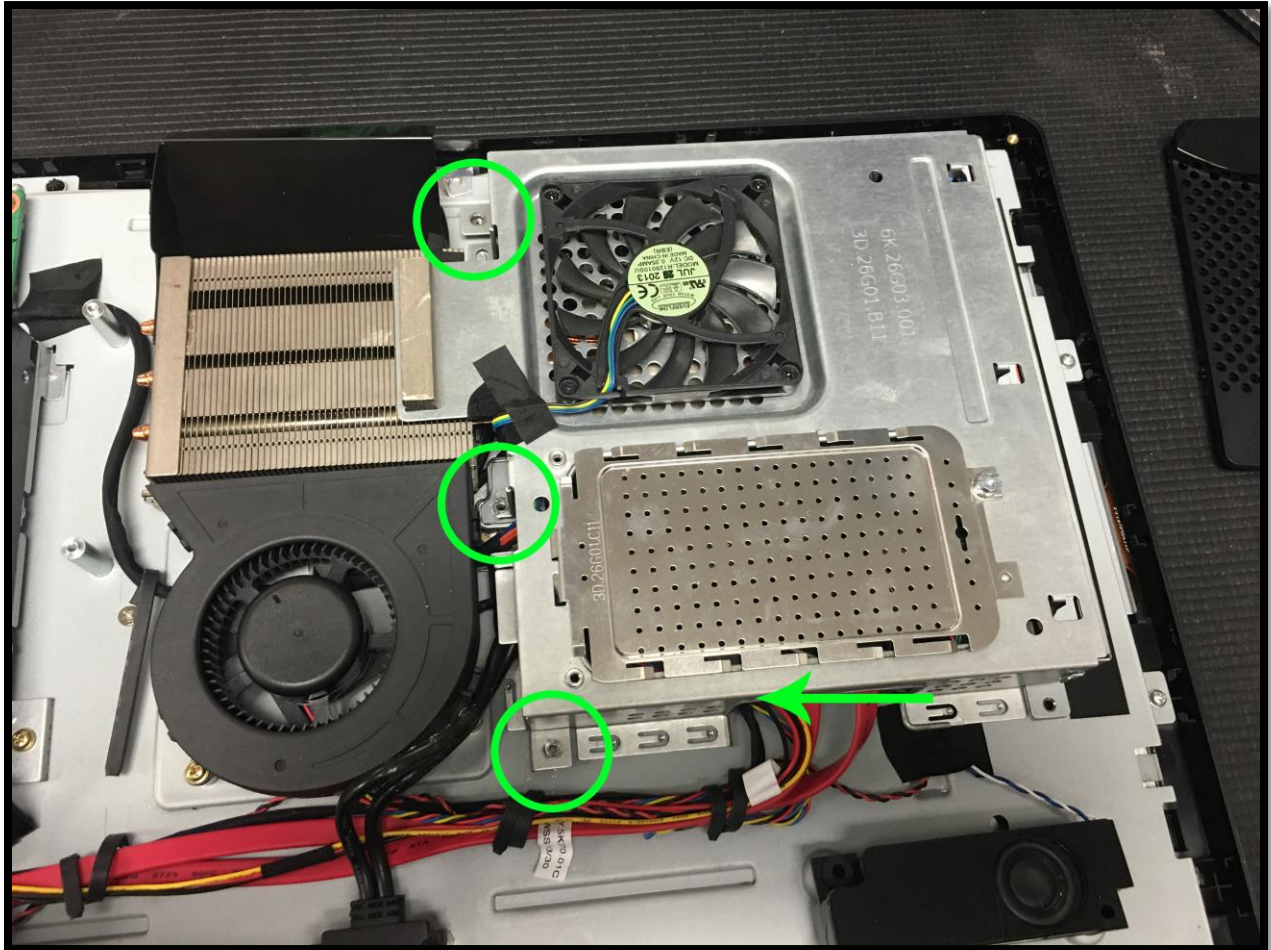


Once the back cover is off remove the three screws hold the RF shield on.

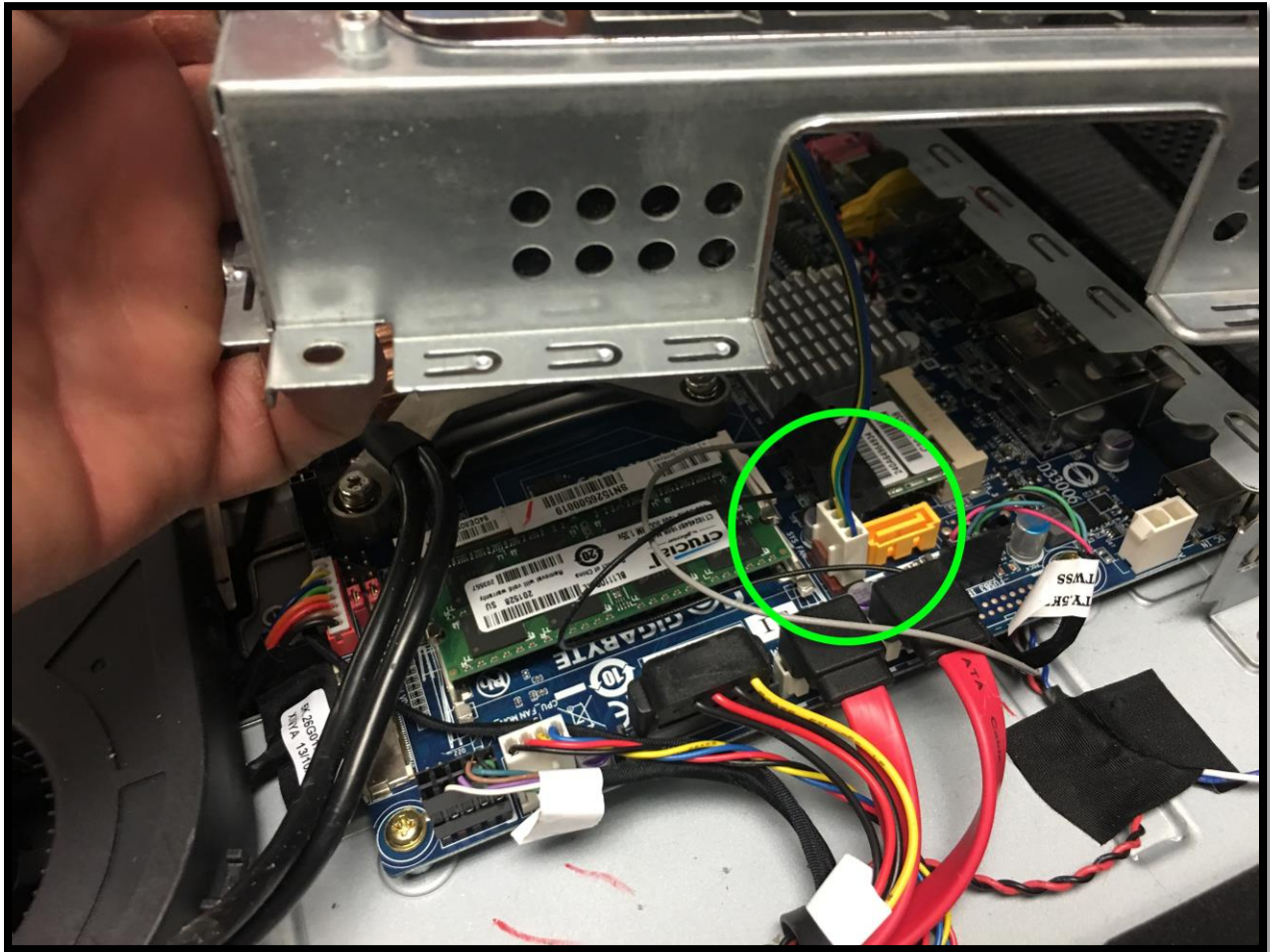


5. Remove the three (3) screws holding on the RF shield and slide to the left.

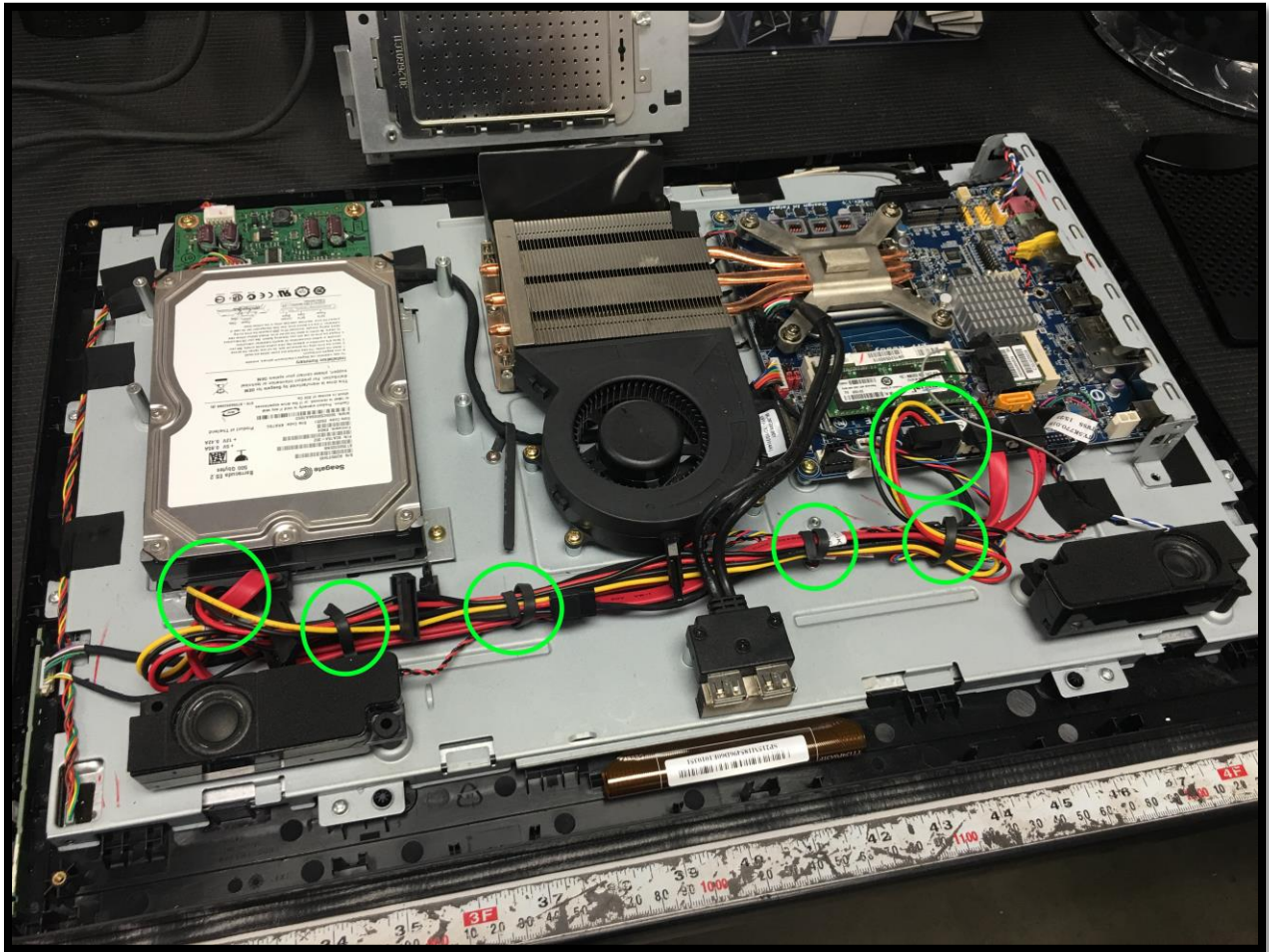
NOTE: BE EXTREMELY CAREFUL TO NOT DROP THE CENTER SCREW. IF THE SCREW FALLS, USE A MAGNET OR MAGNATIZED DRIVER TO REMOVE. DO NOT LIFT TO TRY AND SHAKE OUT.



6. After sliding the shield off unplug the fan cable underneath the cover.



7. Once the shield has been completely removed unplug the SATA power cable from the motherboard and the hard drive. Untwist the cable ties holding the cables in place and remove.



To repair follow these steps in reverse.

IMPORTANT!!! FOLLOW LAST STEP BELOW!!!

After the replacement place the supplied sticker on the back of the PC. (SATA-P 2016 TWS)

Record the Gigabyte Serial number of the PC, as well as the TWS serial number. Examples of the serial numbers shown below. **Email serial numbers to SATACable@TheWorkStation.net immediately after the job is complete.**

